



*Micro*

Smart • Sustainable • Beautiful • Forever

  
INNOVATIVE  
STONE

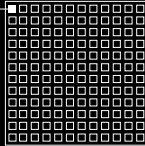






# Colors

5mm



MIX BLACK MATTE



MIX BLUE MATTE



MIX GRAY MATTE



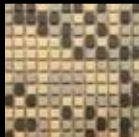
MIX GREEN MATTE



MIX ORANGE  
MATTE



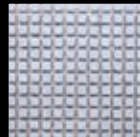
MIX PINK MATTE



MIX SAND MATTE



MIX WHITE MATTE



UNI AQUA MATTE



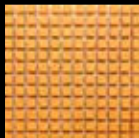
UNI AUBERGINE  
MATTE



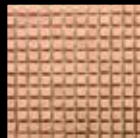
UNI GREEN MATTE



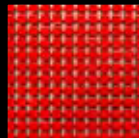
UNI LIME GLOSSY



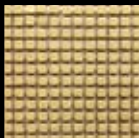
UNI ORANGE  
MATTE



UNI PINK MATTE



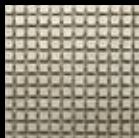
UNI RED GLOSSY



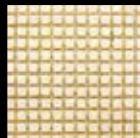
UNI SAND GLOSSY



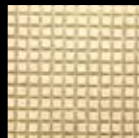
UNI SAND MATTE



UNI SILVER GLOSSY



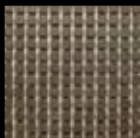
UNI WHITE GLOSSY



UNI WHITE MATTE



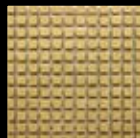
UNI BLACK GLOSSY



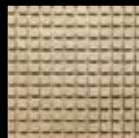
UNI BLACK MATTE



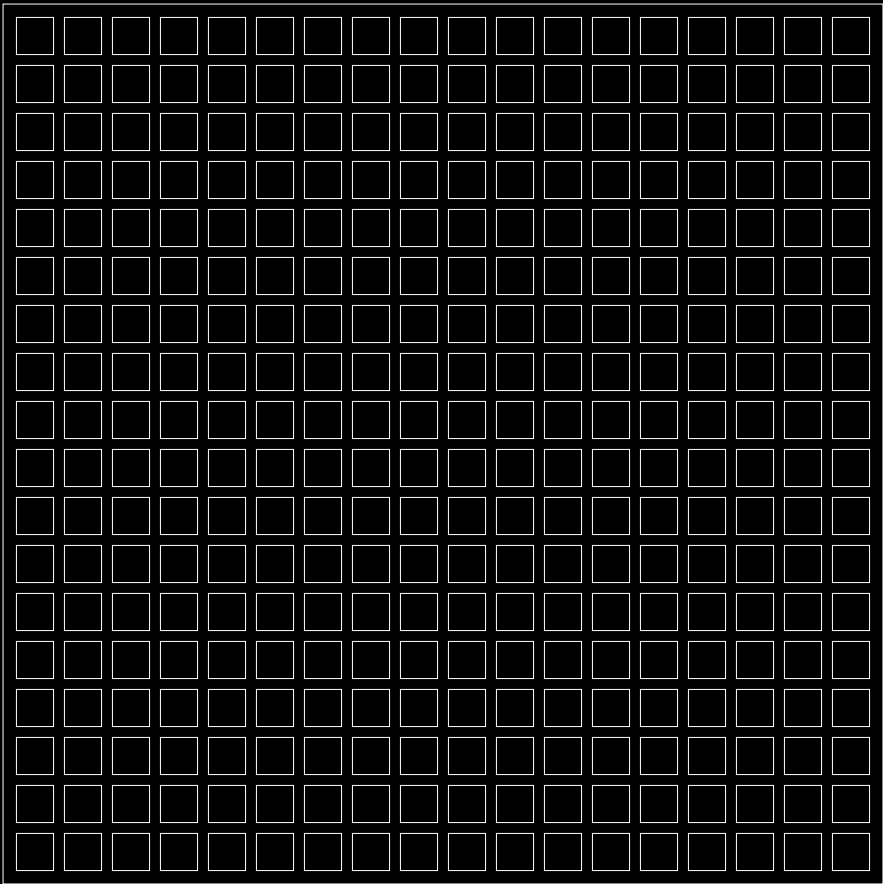
UNI BLUE MATTE



UNI GOLD GLOSSY



UNI GRAY MATTE



## PROPERTIES:

-  Chemical-resistant
-  Hygienic
-  Easy to Clean
-  Flame-resistant
-  Heat-resistant
-  Frost-resistant
-  Abrasion-resistant
-  UV-resistant

COLOR MATCH GROUT  
IS AVAILABLE

## INSTALLATION INFORMATION:

1. **CHECK YOUR MATERIAL.** Make sure you have enough material to finish the job. If not, order material from the same batch (same tone and production run).
2. **SHAVING THE WALL.** The foundation must be completely shaved (smooth) and even. Mosaics are small which means they will show up even the slightest roughness on the surface underneath.
3. **APPLYING ADHESIVE.** Prepare the suggested adhesive and apply the first layer, using the smooth part of the spatula. You must use enough to allow the laying of about one square metre of material. Carefully comb the glue with a toothed spatula (teeth 5 mm wide and 8 mm high). (The adhesive must be 8 mm thick because the mosaic plus adhesive is about 7 mm high).
4. **LAYING THE MOSAICS.** Lay the mosaics, taking care to ensure that the distance between sheets is the same as the distance between one mosaic tile and the next.
5. **SMOOTHING THE MOSAICS.** After laying, smooth the mosaics with the iron spatula (not the rubber scraper) and using your fingers, press the edges of the material where it tends to rise up even after smoothing. This important step ensures that you cannot see the join of the sheet.
6. **FIXING THE MOSAICS.** Once laying is complete, and before the adhesive dries, where necessary, adjust the distance between tiles so that all the joins are the same. You should do this by cutting the mesh with a cutter and moving the tiles with a small trowel or other sufficiently fine instrument.
7. **REMOVING THE GLUE.** Any traces of glue left on the surface of the mosaic must be removed before it dries completely, using a damp sponge.
8. **DRYING THE GLUE.** Then leave to dry for 24 to 48 hours, before grouting.
9. **REMOVING EXCESS GLUE.** Before grouting, remove any excess glue from the joints.
10. **PROTECTING THE MOSAICS (mandatory for WHITE material).** Before grouting, we recommend using a sponge to apply a stain-repellent, non-filming product for fine porcelain stoneware (MP/90 by FILA, GP6 by Marbec or similar). This removes any porosity, so that the grout can easily be removed without having to resort to acid-based products.
11. **FILLING.** Using suggested grout, fill the mosaics. Remove any excess grout before it hardens.
12. **CLEANING THE MOSAICS.** Using a sponge or piece of white felt, wash the mosaics thoroughly with water before the grout hardens. Repeat this operation several times until all the grout has been removed from the surface of the tiles.